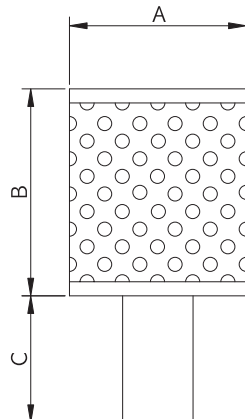


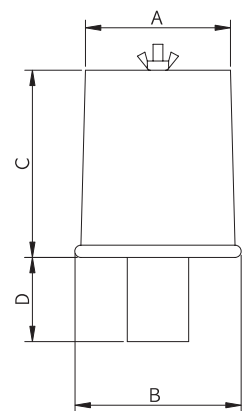
악세서리(필터, 소음기)  
Accessory(Inlet Filter & Additional Silencer)



Filter

Model	A	B	C	Applicable for
1 1/4"(32A)	100	162	72	1 stage HRB-100,101, 2 stage HRB-102/1~302/1,102~302
1 1/2"(38A)	100	162	130	1 stage HRB-200,201, 2 stage HRB-402,402S,402/1
2"(50A)	115	162	78	1 stage HRB-300~HRB-700, 2 stage HRB-502~1002
2 1/2"(65A)	150	252	52	1 stage HRB-800~HRB-1000, 2 stage HRB-1102,1202
3"(80A)	150	252	52	1 stage HRB-800~HRB-1000, 2 stage HRB-1102,1202,1112,1212
4"(100A)	150	252	62	1 stage HRB-1100~1300, 2 stage HRB-1302~1502

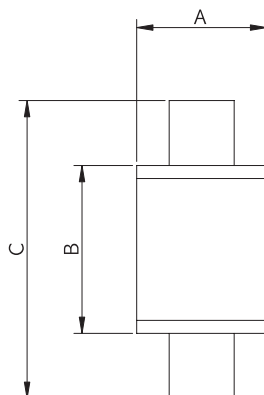
- Only for vacuum purpose / For Indoor usage only
- The estimated pressure loss by the filter is about 2~3mmAq per 1m<sup>3</sup>/min and it is varied proportionately by square value of air volume.
- Clean the mesh of filter often not be blocked by the dust



Cap Filter

Model	A	B	C	D	Applicable for
1 1/4"(36A)	122	138.6	175	66	1 stage HRB-100,101, 2 stage HRB-102/1~302/1,102~302
1 1/2"(42A)	122	138.6	175	130	1 stage HRB-200,201, 2 stage HRB-402,402S,402/1
2"(50A)	145	164	175	81	1 stage HRB-300~HRB-700, 2 stage HRB-502~1002
2 1/2"(65A)	183	202	276	118	1 stage HRB-800~HRB-1000, 2 stage HRB-1102,1202

- Only for vacuum purpose / For Indoor usage only
- The estimated pressure loss by the filter is about 2~3mmAq per 1m<sup>3</sup>/min and it is varied proportionately by square value of air volume.
- Clean the mesh of filter often not be blocked by the dust

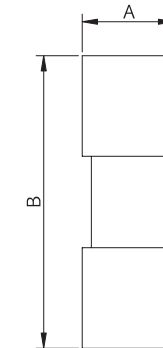
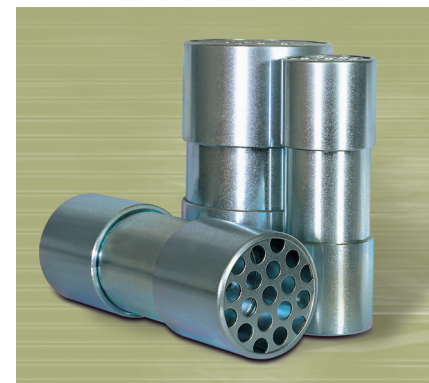


Additional Silencer

Model	A	B	C	Applicable for
1 1/4"(36A)	100	222	306	1 stage HRB-100,101, 2 stage HRB-102/1~302/1,102~302
1 1/2"(42A)	100	222	304	1 stage HRB-200,201, 2 stage HRB-402,402S,402/1
2"(50A)	120	283	383	1 stage HRB-300~HRB-700, 2 stage HRB-502~1002
2 1/2"(65A)	150	401	511	1 stage HRB-800~HRB-1000, 2 stage HRB-1102,1202
3"(80A)	154	440	555	1 stage HRB-800~HRB-1000, 2 stage HRB-1102,1202,1112,1212
4"(100A)	185	443	589	1 stage HRB-1100~1300, 2 stage HRB-1302~1502

- Noise down effect
- When installed in the middle of piping, not to be overloaded to both edge of silencer.

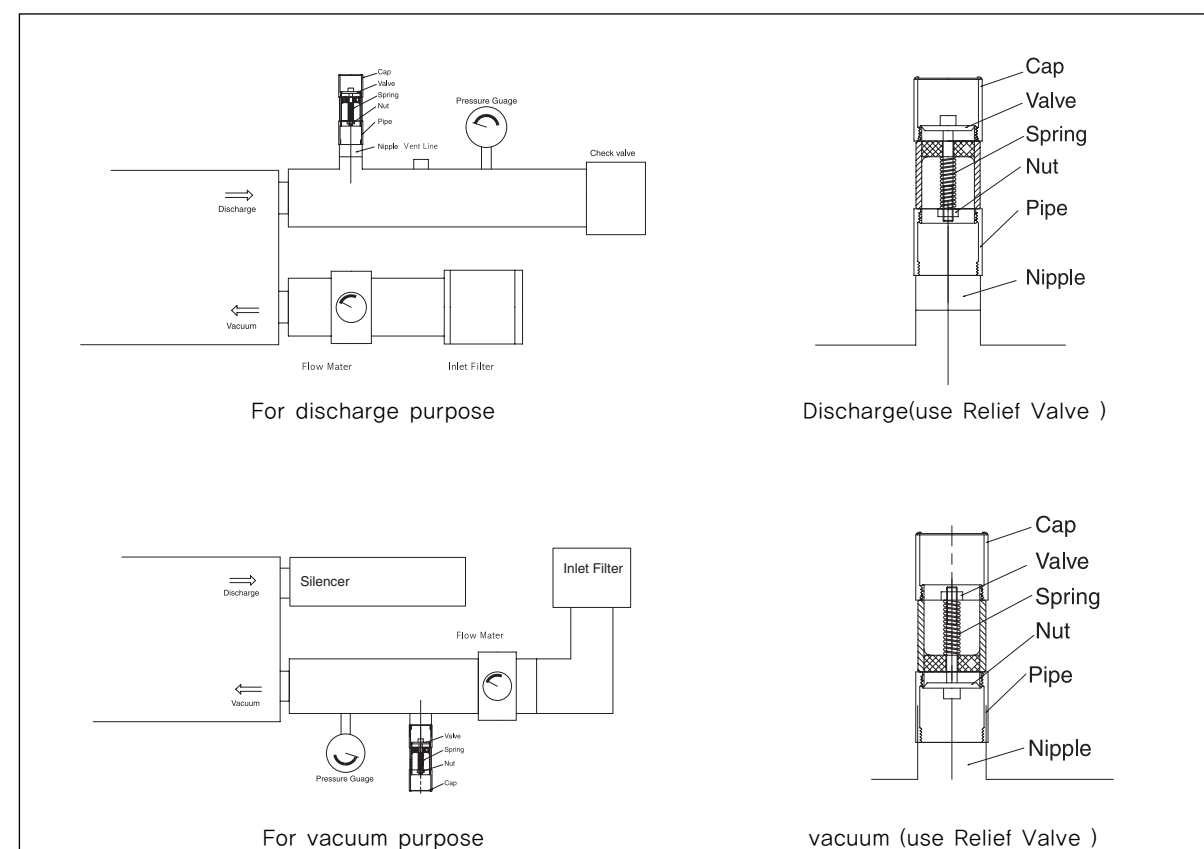
악세서리(릴리프밸브)  
Accessory(Relief Valve)



Relief Valve

Model	A	B	Applicable for
1 1/2"(36A)	55.3	156.9	1 stage HRB-200,201, 2 stage HRB-402,402S,402/1
2"(50A)	68.4	186.4	1 stage HRB-300~HRB-700, 2 stage HRB-502~1002
3"(80A)	93.6	163.2	1 stage HRB-800~HRB-1000, 2 stage HRB-1102, 1202, 1112, 1212

How to use Relief Valve



1. The relief valve is normally delivered to customer without pressure setting, when receive it, customer should set required pressure by loosen or tight the nut along with pressure gauge. The setted pressure should not over the rated pressure and recommend 10% below rated pressure for prevent overheat.
2. The pressure regulation is done by loosen or tighten the nut for spring pressure and it can be certified by pressure gauge.
3. Be sure that do not drop anything into the relief valve and when something be dropped into relief valve, remove it and operate.